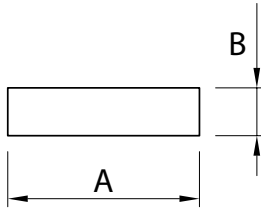




McKechnie®
Transforming Aluminium

Flats Group 1.3.1



SECTION NO	A	B	MASS kg/m	OUTSIDE PERM
1231	9.53	3.18	0.082	25.40
33034	10.00	3.00	0.081	26.00
J781	10.00	3.00	0.082	26.00
J791 ⁺	12.00	3.00	0.097	30.00
9741	12.00	6.00	0.194	36.00
3896	12.23	3.94	0.132	32.51
35231	12.70	2.20	0.076	29.80
5019	12.70	3.00	0.104	31.40
7724	12.70	3.20	0.108	30.40
0320	12.70	4.75	0.163	34.90
0663	12.70	6.35	0.218	73.00
2096	12.70	9.53	0.328	44.50
5991	16.00	3.00	0.130	38.00
5740	19.00	4.50	0.231	47.00
0939	19.05	2.64	0.137	43.38
4984	19.05	3.00	0.155	44.10
4994	19.05	6.00	0.310	50.10
5989	20.00	1.60	0.087	43.20
5992	20.00	3.00	0.162	46.00
J679*	20.00	4.00	0.217	48.00
4954	20.00	6.00	0.325	52.00
7710	20.00	8.00	0.432	56.00
J093	20.00	12.00	0.650	64.00
9336	25.00	1.60	0.108	53.20
5993	25.00	3.00	0.203	56.00
J918	25.00	4.00	0.271	58.00
5996	25.00	6.00	0.405	62.00
5112	25.00	8.00	0.540	66.00
32561	25.00	10.00	0.678	70.00
5999	25.00	12.00	0.810	74.00
J092	25.00	20.00	1.355	90.00
4985	25.40	3.00	0.207	56.80

SECTION NO	A	B	MASS kg/m	OUTSIDE PERM
4990	25.40	4.50	0.310	59.80
0340	25.40	4.75	0.326	60.30
0537	25.40	9.53	0.654	69.90
2852	28.58	3.18	0.247	63.50
K032	30.00	1.63	0.133	63.30
34559	30.00	3.00	0.244	66.00
4986	31.75	3.00	0.258	69.50
0322	31.75	4.75	0.407	73.00
5179	31.75	6.00	0.516	75.50
4999	31.75	12.00	1.029	87.50
0634	31.75	12.70	1.089	88.90
9337	32.00	3.00	0.259	70.00
7288*	32.00	4.00	0.367	76.00
J345	32.00	6.00	0.520	76.00
J241	32.00	10.00	0.867	84.00
4996	38.00	6.00	0.601	88.20
5743	38.00	12.00	1.231	100.00
4987	38.10	3.00	0.310	82.20
0519	38.10	3.18	0.329	82.60
4992	38.10	4.50	0.463	85.20
0630	38.10	4.78	0.494	85.80
5729	38.10	6.00	0.617	88.20
0507	38.10	9.53	0.980	95.30
1362	38.10	15.88	1.634	108.00
6852	38.10	19.05	1.960	114.00
30832	40.00	1.42	0.154	82.84
6077	40.00	3.00	0.324	86.00
6357	40.00	4.00	0.432	88.00
6706	40.00	6.00	0.648	92.00
X519	40.00	8.00	0.867	96.00

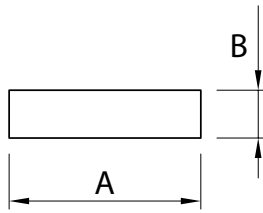
+ Available in 6.0m lengths only

* Some close tolerances apply



McKechnie®
Transforming Aluminium

Flats Group 1.3.2



SECTION NO	A	B	MASS kg/m	OUTSIDE PERM
7426	40.00	10.00	1.080	100.00
K013	40.00	12.00	1.301	104.00
J425	40.00	16.00	1.734	112.00
9751	40.00	20.00	2.160	120.00
9776	40.00	25.00	2.700	129.70
0938	41.28	2.64	0.294	87.80
1864	44.45	3.18	0.384	95.25
33567	45.00	25.00	3.049	140.00
35184	47.00	3.00	0.382	100.00
3852	47.62	1.63	0.217	98.60
K024*	47.65	1.42	0.184	98.10
37068	50.00	1.60	0.217	103.20
5994	50.00	3.00	0.405	106.00
J919	50.00	4.00	0.542	108.00
E531	50.00	5.00	0.678	110.00
5997	50.00	6.00	0.810	112.00
7468	50.00	8.00	1.080	116.00
7425	50.00	10.00	1.350	120.00
6000	50.00	12.00	1.620	124.00
J003	50.00	20.00	2.710	140.00
0506	50.80	4.75	0.651	111.10
0558	50.80	12.70	1.742	127.00
32198	50.80	15.88	2.186	133.36
35183	53.00	4.00	0.575	114.00
J403	60.00	3.00	0.488	126.00
8776	60.00	6.00	0.972	132.00
K650	60.00	10.00	1.626	140.00
9777	60.00	12.00	1.944	143.70
5741	63.50	4.50	0.772	136.00
0679	63.50	6.35	1.089	139.70
5000	63.50	12.00	2.057	151.00

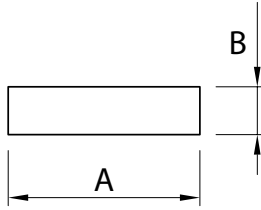
SECTION NO	A	B	MASS kg/m	OUTSIDE PERM
1759	63.50	12.70	2.177	152.40
5780	63.50	25.40	4.355	177.80
J907	64.00	8.50	1.474	145.00
J904	64.00	16.60	2.879	161.20
J900	64.00	32.10	5.567	192.20
30835	66.00	6.00	1.073	144.00
35993	75.00	3.00	0.610	155.48
8590*	75.00	14.00	2.835	178.00
8589*	75.00	18.00	3.645	186.00
7556	75.00	40.00	8.129	229.14
34314	75.00	52.00	10.569	253.31
N720*	75.00	65.00	13.211	280.00
36240	75.00	2.00	0.407	154.00
36231	75.00	10.00	2.032	169.48
4989	76.20	3.00	0.620	158.40
N102	76.20	4.00	0.826	160.40
3970	76.20	4.75	0.977	161.90
5662	76.20	6.00	1.234	164.40
5183	76.20	9.00	1.859	170.40
0529	76.20	9.53	1.961	171.50
5001	76.20	12.00	2.469	176.40
5781	76.20	25.40	5.226	203.20
J723	80.00	1.60	0.347	163.20
6373	80.00	3.00	0.648	166.00
X993	80.00	4.00	0.867	168.00
7040	80.00	6.00	1.296	172.00
34955	80.00	8.00	1.734	175.14
8515	80.00	10.00	2.160	180.00
9742	80.00	12.00	2.592	184.00
J091	80.00	16.00	3.469	192.00
9862	80.00	20.00	4.320	200.00

* Some close tolerances apply



McKechnie®
Transforming Aluminium

Flats Group 1.3.3



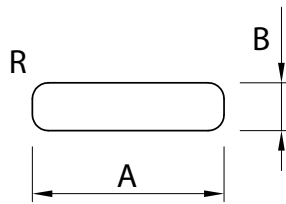
SECTION NO	A	B	MASS kg/m	OUTSIDE PERM
J001	80.00	25.00	5.420	210.00
K033	90.00	2.00	0.488	184.00
E359	90.00	2.50	0.610	185.00
K034	90.00	3.00	0.732	186.00
X472	90.00	12.00	2.927	204.00
G566	95.00	6.30	1.620	202.60
G567	95.00	9.20	2.369	208.40
G568	95.00	12.10	3.115	214.20
G569	95.00	15.00	3.862	220.00
G570	95.00	19.00	4.892	228.00
31974	95.00	50.00	12.872	289.66
E795	100.00	1.50	0.407	203.00
J712	100.00	1.60	0.433	203.20
5995	100.00	3.00	0.810	206.00
7392	100.00	4.00	1.080	204.00
Z120	100.00	5.00	1.355	210.00
5998	100.00	6.00	1.620	212.00
37645	100.00	8.00	2.168	215.66
8333*	100.00	10.00	2.700	220.00
6001	100.00	12.00	3.240	224.00
5021	100.00	25.00	6.775	250.00
Z716	100.00	33.00	8.943	266.00
N719*	100.00	40.00	10.840	280.00
N718*	100.00	50.00	13.550	300.00
30640	100.00	60.00	16.260	320.00
4998	101.60	9.00	2.469	221.20
5002	101.60	12.00	3.292	227.20
0531	101.60	12.70	3.484	228.60
E300	108.00	8.00	2.341	232.00
31299	110.00	4.50	1.341	229.00
E319	110.00	5.00	1.491	230.00
7015	114.00	10.00	3.078	248.00
36321	115.00	6.00	1.868	240.63
33258	115.00	16.00	4.986	261.66

SECTION NO	A	B	MASS kg/m	OUTSIDE PERM
34909	120.00	40.00	13.008	320.00
36227	125.00	3.00	1.016	255.48
E301	125.00	6.00	2.033	262.00
1278	127.00	4.75	1.629	263.50
2736	127.00	6.35	2.177	266.70
3301	127.00	12.70	4.355	279.40
30962	130.00	5.00	1.762	270.00
30080	135.00	6.00	2.195	282.00
Z448	150.00	1.80	0.732	303.60
K145*	150.00	3.00	1.220	306.00
33972	150.00	5.00	2.033	310.00
31476	150.00	10.00	4.065	320.00
3620	152.40	12.70	5.245	330.20
5784	152.40	25.40	10.452	355.60
N917	160.00	4.00	1.734	328.00
8516	160.00	6.00	2.592	332.00
32706	160.00	8.00	3.469	336.00
9608	160.00	10.00	4.320	340.00
9432	160.00	12.00	5.184	344.00
32898	162.00	45.00	19.756	414.00
32900	162.00	50.00	21.951	424.00
30387	166.00	39.00	17.545	410.00
32577	190.00	24.00	12.358	428.00
38468	200.00	3.00	1.626	405.48
E320	200.00	10.00	5.420	420.00
E321	200.00	12.00	6.504	424.00
3325	203.20	12.70	6.968	431.80
34020	204.00	3.00	1.658	413.14
38159	300.00	10.00	8.129	618.63



McKechnie®
Transforming Aluminium

Flats - Radius Edge Group 1.3.4



SECTION NO	A	B	R	MASS kg/m	OUTSIDE PERM
3896*	12.32	3.94	0.38	0.132	32.51
7724	12.70	3.20	0.80	0.108	30.40
34052	13.00	5.00	0.50	0.176	35.14
2012	15.00	3.15	1.57	0.122	33.00
30282	15.80	5.00	0.70	0.213	40.40
33620	19.01	2.64	1.32	0.132	41.03
1617	19.05	3.18	1.57	0.158	41.76
0632	19.05	3.96	1.98	0.195	42.60
0864	19.05	4.78	2.36	0.233	43.50
X552	25.00	6.00	3.00	0.386	56.85
5113	25.00	10.00	1.00	0.675	70.00
3858	25.40	3.18	1.59	0.212	54.40
N734	25.40	6.35	3.18	0.414	58.05
9367	31.75	6.00	2.00	0.505	72.07
9368	32.00	4.00	1.30	0.342	69.77
34913	36.00	6.00	3.00	0.564	78.85
8791*	38.00	12.00	1.00	1.229	98.28
30558	50.00	3.00	1.50	0.401	103.42
X551	50.00	6.00	3.00	0.792	106.85

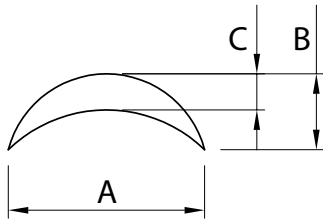
SECTION NO	A	B	R	MASS kg/m	OUTSIDE PERM
X273	50.00	8.00	4.00	1.047	109.13
4978	50.00	25.00	1.60	3.382	147.25
7391	50.80	6.35	3.18	0.848	108.85
34508	69.85	38.10	0.50	7.212	215.04
X190	75.00	5.00	1.00	1.014	158.23
4982	75.00	25.00	1.60	5.062	200.00
7556*	75.00	40.00	0.50	8.129	229.14
34314	75.00	52.00	0.40	10.569	253.31
9754	80.00	6.00	3.00	1.275	166.80
4980	100.00	20.00	1.60	5.420	240.00
35870	110.00	10.00	0.80	2.980	238.63
35780	125.00	25.00	1.00	8.466	298.28
35379	150.00	10.00	1.00	4.063	318.28
2663	152.50	12.70	1.57	5.278	327.66
34020	204.00	3.00	0.50	1.658	413.14
7524	220.00	6.00	1.00	3.562	450.28

* Some close tolerances apply



McKechnie®
Transforming Aluminium

Half Rounds Group 1.3.5



SECTION NO	A	B	C	MASS kg/m	OUTSIDE PERM
0309	12.70	4.75	4.37	0.113	29.65
0336	15.88	4.75	3.96	0.121	35.40
0276	19.05	4.75	3.18	0.122	41.50
0275	25.40	4.75	3.18	0.153	53.30
0274	31.75	6.35	4.75	0.286	67.00
0273	38.10	6.35	4.75	0.351	79.10